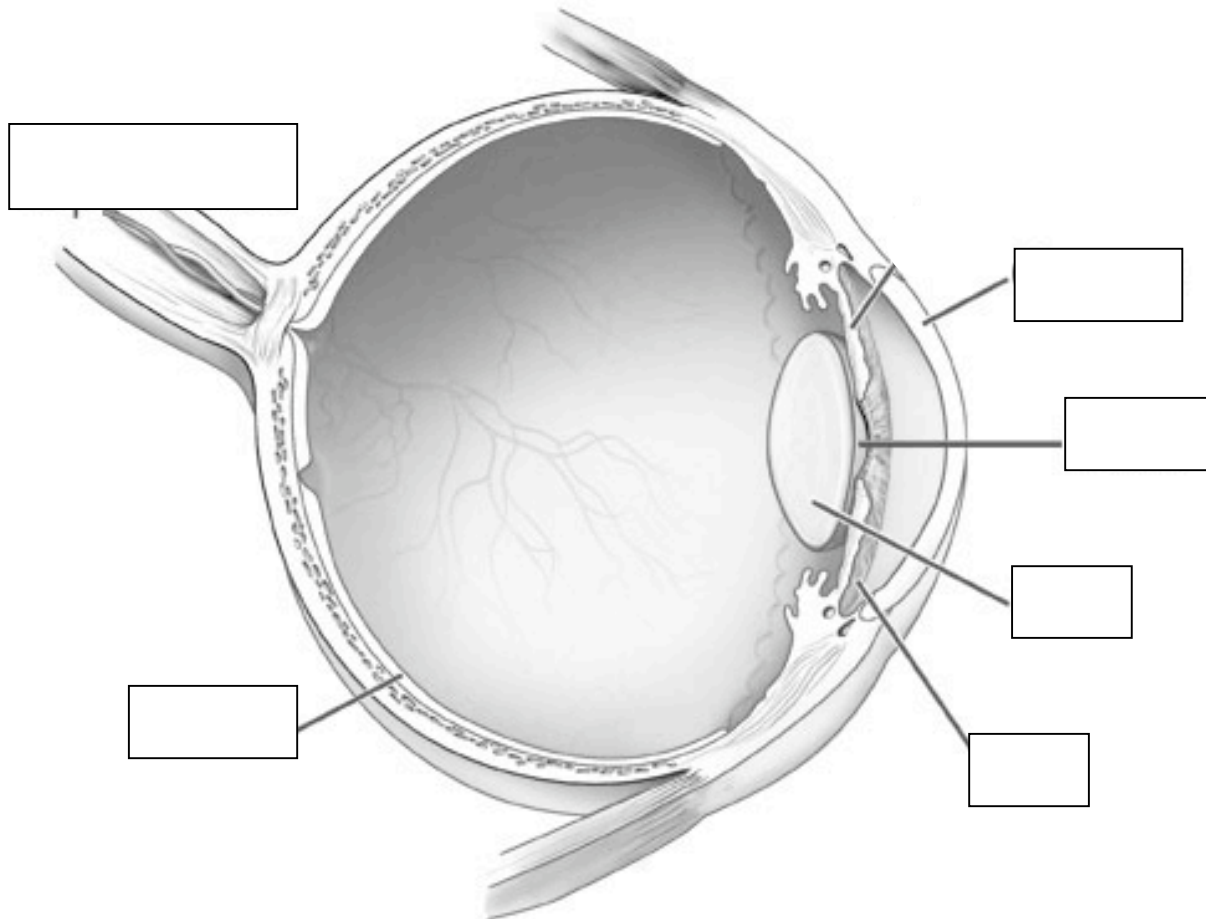


Diagram: The Eye

Date _____

Last Name _____, First _____ per _____

Use separate colors to color each part of the eye. Label each part of the eye. Then answer the questions below.



1. The clear tissue that covers the front of the eye. _____
2. The opening through which light enters the eye _____
3. Giving the eye its color, this circular structure surrounds the pupil and regulates the amount of light that comes into the eye. _____
4. A clear flexible structure that focuses the light. _____
5. A sheet of light sensitive cells that line the back of the eye. _____
6. Working best in dim light, these receptor cells pick up shades of grey, black and white. _____
7. Working best in bright light, these receptor cells enable you to see colors. _____
8. This nerve sends electrical impulses containing information about light to the brain.
